

Possible Retreats

- Business Conferences/Retreats
- Staff training/Leadership Development
- Seminars/Workshops
- Spiritual Retreats
- Family/Class Reunions
- Fundraising Events
- Art Focused Weekends
- Drumming Circles
- Education Classes
- Community Groups
- Family/Friend Get-Aways
- Volunteer Service Projects
- Recreational Activities
- Sports Team Retreat
- Weddings/Receptions
- Men/Women Retreats
- Possibilities are endless—just ask



Pinewoods Retreat Center

89382 E. Frontage Rd.

Sturgeon Lake, MN 55783

218-372-3188

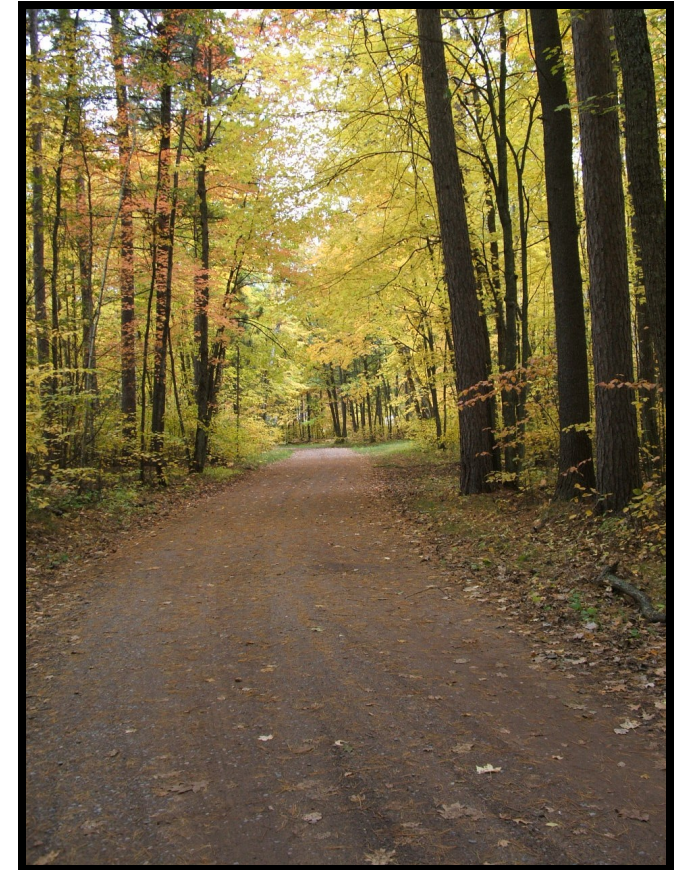
218-722-4745 ext. 181

camping@duluthymca.org

Pinewoods Retreat Center

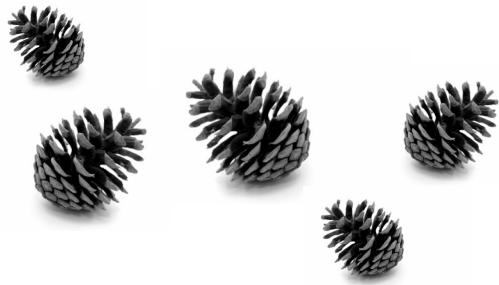


at Camp Miller



"I only went out for a walk, and finally concluded to stay out till sundown, for going out, I found, was really going in."

~ John Muir



PINEWOODS RETREAT CENTER at Camp Miller

Pinewoods Retreat Center, located on the shores of Sturgeon Lake, will make your group's event a wonderful and stress-free experience. Whether your group is interested in a day conference setting or an overnight adventure, the Pinewoods Retreat Center is the place to gather. A natural setting of over 340 acres of forest and lakeshore will welcome everyone to one of nature's most beautiful landscapes.

RETREAT FACILITIES

Jack McLeod Lodge

Build in 2004, this modern lodge has two rooms with twelve available beds in each. Restrooms and shower facilities as well as a spacious and contemporary meeting room with gas fireplace.



Cabins

Eight total cabins which sleep ten to fourteen people. Shower/bathroom facilities are located a short walk away. Stone fireplaces in some cabins, others offer gas heat wall units.



Hanson Lodge

Sleeps up to 36 people. This lodge has nine private sleeping rooms with two twin size bunks in each room. Restroom and shower facilities are located centrally in the lodge. A comfortable meeting room with a gas fireplace is part of the lodge and can easily accommodate gatherings of 40 people.



McLeod Lodge

Located on the shore of Sturgeon Lake, this is a large meeting hall and lodge. Large stone fireplace, wooden chairs, open beam ceilings, groups of 150.



Garber Lodge

This lodge sleeps up to 12 people with three private rooms with two bunk beds in each, a cozy meeting area accommodates six to eight people. A bathroom/shower facility is adjacent to meeting area.



Oak Lodge

Sleeps up to 24 people. This side-by-side cabin sleeps ten on each side with a shared meeting room between. A bath room/shower facility in each side of cabin makes this lodge ideal for groups which may want male on one side, females on the other.

The Sauna

Relax in our gas powered sauna, the perfect accommodation on a cool Minnesota evening.

Mitchell Dining Hall

Mitchell Lodge is our state of the art dining hall and commercial kitchen facility which seats 200 people and provides a beautiful view of Sturgeon Lake through its many large picture windows. Camp staff will work with you to design a menu that suits the dietary needs of your group, or you can choose from our traditional menu. Large meeting or recreation available upstairs and in the basement.



LOCATION

Pinewoods Retreat Center is located approximately 45 miles south of Duluth and 105 miles north of Minneapolis. Take Exit #209 off of Interstate 35. Our central location makes us an easy travel from the Twin Cities area or Duluth.



PROGRAM OPTIONS



SPRING/FALL/WINTER HIKING
CANOEING • KAYAKING
SNOW-SHOEING • ICE FISHING SKATING
SPORTS • CLIMBING TOWER • SAUNA CHALLENGE
COURSE • BROOMBALL ARCHERY • HIGH
ROPES • CAMPFIRE NATURE PHOTOGRAPHY • CROSS
COUNTRY SKIING

Rates

- We offer the standard rate of \$39.00/night /person, however, prices vary according to selected lodging
- We offer the standard rate of \$7.50/meal for adults and \$5.50/meal for children ages 3-8
- Building usage and programming fees may apply

YCAMP™

We build strong kids, strong families, strong communities.